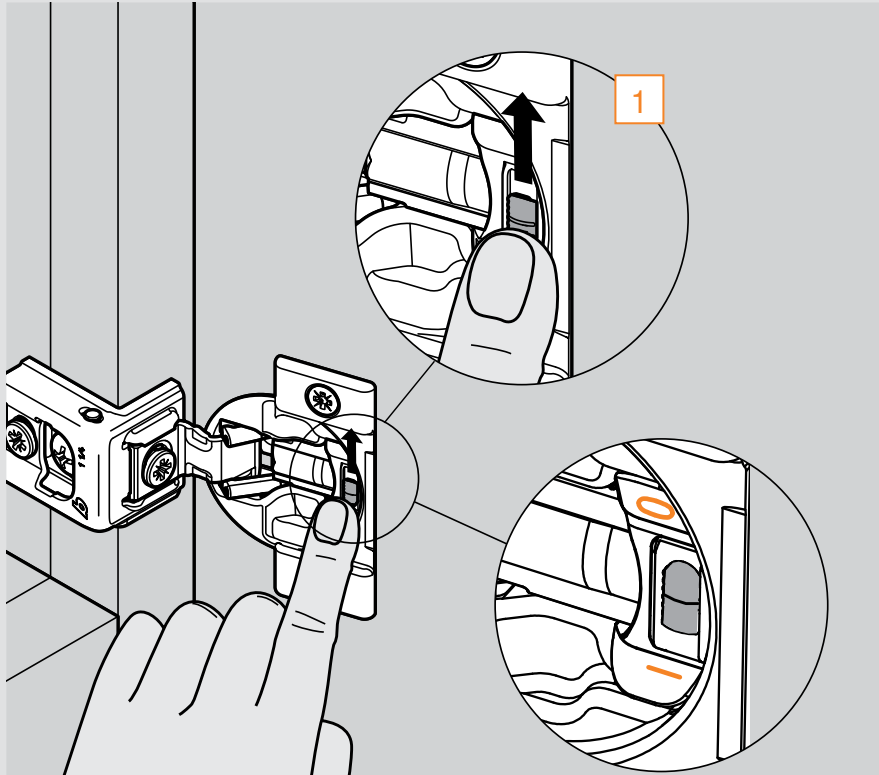


# COMPACT BLUMOTION

## BLUMOTION deactivation

### Switch on the hinge cup

For small or light doors, the BLUMOTION can be deactivated on one of the hinges. COMPACT BLUMOTION comes in the activated position, marked with a "1". The deactivated position is marked with a "0".



Door must be closed once for the deactivation to be complete. To reactivate, move switch back to the original position "1".

